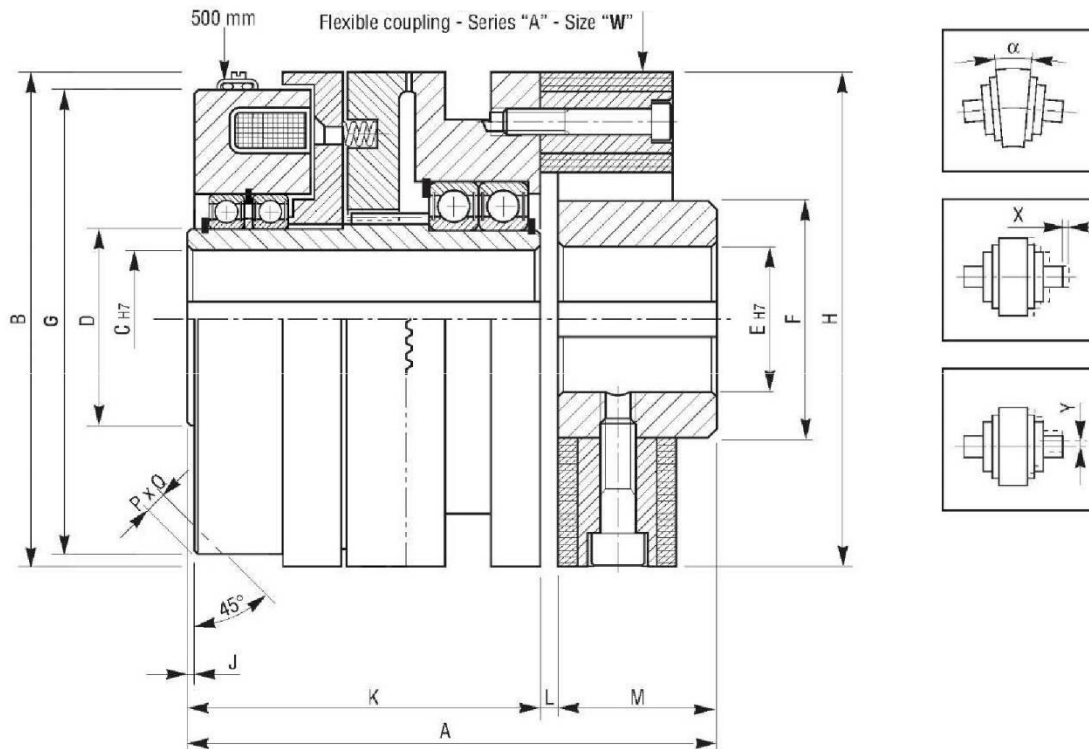


# ETCS/C Series Spring Applied Tooth Clutch with Flexible Coupling



Model	Torque Ms (Nm)	Max. R.P.M	Watt $\Omega$		Coupling Size (W)	Weight (kg)
			20°	120°		
090	50	4300	50	36	4	3.5
105	100	3600	78	56	8	5.8
115	200	3300	84	60	12	6.9
140	400	2700	135	97	25	12.7
185	800	2100	150	108	30	28.5
215	1600	1800	175	126	90	50.8
265	3200	1450	320	230	140	77.8
320	6400	1200	720	518	250	142.2
385	12800	1000	1100	792	600	286.3

Model	A	B	C		D	E Max	F	G	H	J	K	L	M	PxQ	X	Y	$\alpha$
			Min	Max													
090	120	100	15	30	40	30	45	96	100	1	86	4	30	4x10	2	1	1°
105	140	114	15	35	50	38	60	108.6	120	1.5	94	4	42	4x10	2	1	1°
115	144	125	20	38	55	38	60	120	122	1	98	4	42	4x10	3	1	1°
140	177	154	25	50	70	55	85	146	170	1	116	6	55	6x10	3	1	1°
185	226	205	30	70	100	65	100	194	200	1.2	152	8	66	6x10	3	1	1°
215	278	245	40	80	110	85	125	231	260	10.5	190	8	80	7x12	3	1	1°
265	318	290	45	95	120	85	125	274	260	19.5	230	8	80	10x16	3	1	1°
320	398	350	60	110	150	115	160	329	340	22	290	8	100	12x18	3	1	1°
385	510	425	90	130	190	140	200	405	470	27	340	15	155	12x20	3	1	1°